


(19)  **Europäisches Patentamt**
European Patent Office
Office européen des brevets



(11) **EP 1 077 253 A1**

(12) **EUROPEAN PATENT APPLICATION**

(43) Date of publication:
21.02.2001 Bulletin 2001/08

(51) Int Cl.7: **C12N 5/00**, C12N 5/06,
C12N 1/38

(21) Application number: **00307155.2**

(22) Date of filing: **21.08.2000**

(84) Designated Contracting States:
AT BE CH CY DE DK ES FI FR GB GR IE IT LI LU
MC NL PT SE
Designated Extension States:
AL LT LV MK RO SI

(30) Priority: **19.08.1999 US 149850 P**
17.05.2000 US 573989

(71) Applicant: **Zen Bio, Inc.**
Research Triangle Park, NC 27709 (US)

(72) Inventors:
• **Halvorsen, Yuan-Di Chang**
Holly Springs, North Carolina 27540 (US)
• **Wilkison, William O.**
Bahama, North Carolina 27503 (US)
• **Gimble, Jeffrey**
Durham, North Carolina 27705 (US)

(74) Representative:
MacDougall, Donald Carmichael et al
Cruikshank & Fairweather
19 Royal Exchange Square
Glasgow G1 3AE, Scotland (GB)

(54) **Use of adipose tissue-derived stromal cells for chondrocyte differentiation and cartilage repair**

(57) Methods and compositions for directing adipose-derived stromal cells cultivated *in vitro* to differentiate into cells of the chondrocyte lineage are disclosed. The invention further provides a variety of chondroinductive agents which can be used singly or in combination with other nutrient components to induce chondro-

genesis in adipose-derived stromal cells either in cultivating monolayers or in a biocompatible lattice or matrix in a three-dimensional configuration. Use of the differentiated chondrocytes for the therapeutic treatment of a number of human conditions and diseases including repair of cartilage *in vivo* is disclosed.

EP 1 077 253 A1

Description

FIELD OF INVENTION

[0001] The present invention relates to methods and compositions for directing adipose-derived stromal cells cultivated *in vitro* to differentiate into cells of the chondrocyte lineage and particularly to such directed lineage induction prior to, or at the time of, their implantation into a recipient or host for the therapeutic treatment of pathologic conditions in humans and other species.

BACKGROUND OF THE INVENTION

[0002] Mesenchymal stem cells (MSCs) are the formative pluripotent blast or embryonic-like cells found in bone marrow, blood, dermis, and periosteum that are capable of differentiating into specific types of mesenchymal or connective tissues including *adipose*, osseous, cartilaginous, elastic, muscular, and fibrous connective tissues. The specific differentiation pathway which these cells enter depends upon various influences from mechanical influences and/or endogenous bioactive factors, such as growth factors, cytokines, and/or local microenvironmental conditions established by host tissues.

[0003] In prenatal organisms, the differentiation of MSCs into specialized connective tissue cells is well established; for example embryonic chick, mouse or human limb bud mesenchymal cells differentiate into cartilage, bone and other connective tissues (Caplan A I (1981) In: 39th Annual Symposium of the Society for Developmental Biology, ed by S. Subtelney and U Abbott, pp 3768. New York, Alan R Liss Inc; Elmer *et al.* (1981) *Teratology*, 24:215-223; Hauschka S.D. (1974) *Developmental Biology* (1974) 37:345-368; Solursh *et al.* (1981) *Developmental Biology*, 83:9-19; Swalla *et al.* (1986) *Developmental Biology*, 116:31-38. In addition, a clonal rat fetus calvarial cell line has also been shown to differentiate into muscle, fat, cartilage, and bone (Goshima *et al.* (1991) *Clin Orthop Rel Res.* 269: 274-283. The existence of MSCs in post-natal organisms has not been widely studied with the objective of showing the differentiation of post-embryonic cells into several mesodermal phenotypes. The few studies which have been done involve the formation of bone and cartilage by bone marrow cells following their encasement in diffusion chambers and *in vivo* transplantation (Ashton *et al.* (1980) *Clin Orthop Rel Res*, 151:294-307; Bruder *et al.* (1990) *Bone Mineral*, 11:141-151, 1990). Recently, cells from chick periosteum have been isolated, expanded in culture, and, under high density conditions *in vitro*, shown to differentiate into cartilage and bone (Nakahara *et al.* (1991) *Exp Cell Res*, 195: 492-503). Rat bone marrow-derived mesenchymal cells have been shown to have the capacity to differentiate into osteoblasts and chondrocytes when implanted *in vi-*

vo (Dennis *et al.* (1991) *Cell Transpl*, 1:2332; Goshima *et al.* (1991) *Clin Orthop Rel Res.* 269:274-283). Work by Johnstone *et al.* U.S. Pat. No. 5,908,784 has shown the ability of mesenchymal cells derived from skin to differentiate into cells biochemically and phenotypically similar to chondrocytes.

[0004] The adult bone marrow microenvironment is a potential source for these hypothetical mesodermal stem cells. Cells isolated from adult marrow are referred to by a variety of names, including stromal cells, stromal stem cells, mesenchymal stem cells (MSCs), mesenchymal fibroblasts, reticular-endothelial cells, and West-en-Bainton cells (Gimble *et al.* (Nov. 1996) *Bone* 19(5): 421-8). *In vitro* studies have determined that these cells can differentiate along multiple mesodermal or mesenchymal lineage pathways. These include, but are not limited to, adipocytes (Gimble, *et al.* (1992) *J. Cell Biochem.* 50:73-82, chondrocytes; Caplan, *et al.* (1998) *J Bone Joint Surg. Am.* 80(12):1745-57; hematopoietic supporting cells, Gimble, *et al.* (1992) *J. Cell Biochem.* 50:73-82; myocytes, Prockop, *et al.* (1999) *J. Cell Biochem.* 72(4):570-85; myocytes, Charbord, *et al.* (1999) *Exp. Hematol*, 27(12):1782-95; and osteoblasts, Beresford *et al.* (1993) *J. Cell Physiol.* 154:317-328). The bone marrow has been proposed as a source of stromal stem cells for the regeneration of bone, cartilage, muscle, adipose tissue, and other mesenchymal derived organs. The major limitations to the use of these cells are the difficulty and risk attendant upon bone marrow biopsy procedures and the low yield of stem cells from this source.

[0005] Adipose tissue offers a potential alternative to the bone marrow as a source of multipotential stromal stem cells. Adipose tissue is readily accessible and abundant in many individuals. Obesity is a condition of epidemic proportions in the United States, where over 50% of adults exceed the recommended BMI based on their height. Adipocytes can be harvested by liposuction on an outpatient basis. This is a relatively non-invasive procedure with cosmetic effects that are acceptable to the vast majority of patients. It is well documented that adipocytes are a replenishable cell population. Even after surgical removal by liposuction or other procedures, it is common to see a recurrence of adipocytes in an individual over time. This suggests that adipose tissue contains stromal stem cells which are capable of self-renewal.

[0006] Pathologic evidence suggests that adipose-derived stromal cells are capable of differentiation along multiple mesenchymal lineages. The most common soft tissue tumor, liposarcomas, develop from adipocyte-like cells. Soft tissue tumors of mixed origin are relatively common. These may include elements of adipose tissue, muscle (smooth or skeletal), cartilage, and/or bone. Just as bone forming cells within the bone marrow can differentiate into adipocytes or fat cells, the extramedullary adipocytes are capable of forming osteoblasts (Halvorsen WO 99/28444).

[0007] Cartilage is a hyperhydrated structure with water comprising 70% to 80% of its weight. The remaining 20% to 30% comprises type II collagen and proteoglycan. The collagen usually accounts for 70% of the dry weight of cartilage (in "Pathology" (1988) Eds. Rubin & Farber, J. B. Lippincott Company, PA pp. 1369-1371). Proteoglycans are composed of a central protein core from which long chains of polysaccharides extend. These polysaccharides, called glycosaminoglycans, include: chondroitin-4-sulfate, chondroitin-6-sulfate, and keratan sulfate. Cartilage has a characteristic structural organization consisting of chondrogenic cells dispersed within an endogenously produced and secreted extracellular matrix. The cavities in the matrix which contain the chondrocytes are called cartilage lacunae. Unlike bone, cartilage is neither innervated nor penetrated by either the vascular or lymphatic systems (Clemente (1984) in "Gray's Anatomy, 30.sup.th Edit," Lea & Febiger).

[0008] Three types of cartilage are present in mammals and include: hyaline cartilage; fibrocartilage and elastic cartilage (Rubin and Farber, supra). Hyaline cartilage consists of a gristly mass having a firm, elastic consistency, is translucent and is pearly blue in color. Hyaline cartilage is predominantly found on the articulating surfaces of articulating joints. It is found also in epiphyseal plates, costal cartilage, tracheal cartilage, bronchial cartilage and nasal cartilage. Fibrocartilage is essentially the same as hyaline cartilage except that it contains fibrils of type 1 collagen that add tensile strength to the cartilage. The collagenous fibers are arranged in bundles, with the cartilage cells located between the bundles. Fibrocartilage is found commonly in the annulus fibrosis of the intervertebral disc, tendinous and ligamentous insertions, menisci, the symphysis pubis, and insertions of joint capsules. Elastic cartilage also is similar to hyaline cartilage except that it contains fibers of elastin. It is more opaque than hyaline cartilage and is more flexible and pliant. These characteristics are defined in part by the elastic fibers embedded in the cartilage matrix. Typically, elastic cartilage is present in the pinna of the ears, the epiglottis, and the larynx.

[0009] The surfaces of articulating bones in mammalian joints are covered with articular cartilage. The articular cartilage prevents direct contact of the opposing bone surfaces and permits the near frictionless movement of the articulating bones relative to one another (Clemente, supra). Two types of articular cartilage defects are commonly observed in mammals and include full-thickness and partial-thickness defects. The two types of defects differ not only in the extent of physical damage but also in the nature of repair response each type of lesion elicits.

[0010] Full-thickness articular cartilage defects include damage to the articular cartilage, the underlying subchondral bone tissue, and the calcified layer of cartilage located between the articular cartilage and the subchondral bone. Full-thickness defects typically arise

during severe trauma of the joint or during the late stages of degenerative joint diseases, for example, during osteoarthritis. Since the subchondral bone tissue is both innervated and vascularized, damage to this tissue is often painful. The repair reaction induced by damage to the subchondral bone usually results in the formation of fibrocartilage at the site of the full-thickness defect. Fibrocartilage, however, lacks the biomechanical properties of articular cartilage and fails to persist in the joint on a long term basis.

[0011] Partial-thickness articular cartilage defects are restricted to the cartilage tissue itself. These defects usually include fissures or clefts in the articulating surface of the cartilage. Partial-thickness defects are caused by mechanical arrangements of the joint which in turn induce wearing of the cartilage tissue within the joint. In the absence of innervation and vasculature, partial-thickness defects do not elicit repair responses and therefore tend not to heal. Although painless, partial-thickness defects often degenerate into full-thickness defects.

[0012] In accordance with the present invention it has been observed by the inventors that when human adipose tissue-derived stromal cells are associated in a three-dimensional format they can be induced to commit and differentiate along the chondrogenic pathway when contacted *in vitro* with certain chondroinductive agents or factors. The three dimensional format is critical to the *in vitro* chondrogenesis of the invention and the cells are - preferably condensed together, for example, as a packed or pelleted cell mass or in an alginate matrix. This invention presents examples of methods and composition for the isolation, differentiation, and characterization of adult human extramedullary adipose tissue stromal cells along the chondrocyte lineage and outlines their use for the treatment of a number of human conditions and diseases. This *in vitro* process is believed to recapitulate that which occurs *in vivo* and can be used to facilitate repair of cartilage *in vivo* in mammals.

SUMMARY OF INVENTION

[0013] The present invention provides methods and composition for consistent and quantitative induction of stromal cells derived from subcutaneous, mammary, gonadal, or omental adipose tissues into fully functional chondrocytes. The methods comprise incubation of isolated adipose tissue-derived stromal cells, plated at densities of 500 to 20,000 cells/cm² in a chemically defined culture medium having or supplemented with (1) a chondroinductive agent that can activate any cellular transduction pathway leading to the mature chondrocyte phenotype; (2) an antibiotic; (3) a nutrient supplement such as fetal bovine serum or horse serum; (4) ascorbate or related vitamin C analogue; and (5) a glucocorticoid or another chemical agent capable of activating the cellular glucocorticoid receptor.

[0014] The present invention also provides a method

for differentiating adipose tissue derived stromal cells into chondrocyte cells by pelleting stromal cells in medium such as DMEM or alpha-MEM or RPMI 1640 and supplementing the medium with (1) a chondroinductive agent that can activate any cellular transduction pathway leading to the mature chondrocyte phenotype; (2) an antibiotic; (3) a nutrient supplement such as fetal bovine serum or horse serum; (4) ascorbate or related vitamin C analogue; and (5) a glucocorticoid or another chemical agent capable of activating the cellular glucocorticoid receptor.

[0015] The present invention also provides a method for differentiating adipose tissue derived stromal cells into chondrocytic cells by suspending the cells in a calcium alginate or other biocompatible lattice or matrix capable of supporting chondrogenesis in a three dimensional configuration.

[0016] The present invention provides methods for determining the ability of these culture conditions and agents to direct the differentiation and function of the adipose tissue-derived stromal cells, for the transduction of viral vectors carrying regulatory genes into the stromal cells, for the transfection of plasmid vectors carrying regulatory genes into the stromal cells, for the tracking and detection of functional proteins encoded by these genes, and for developing biomechanical carriers for the re-introduction of these cells into a living organism.

[0017] This invention further provides methods for the introduction of these chondrocytes into cartilage defect areas for repair.

[0018] The methods and composition have use in drug discovery for compounds and proteins with relevance to the differentiated cell-related disease states and traumatic injuries including but not limited to: anterior crucia ligament tears, full-thickness articular cartilage defects, partial-thickness articular cartilage defects.

BRIEF DESCRIPTION OF THE DRAWINGS

[0019] Figure 1 shows the immunodetection of collagen type II in human adipose stromal cells from monolayer cultures. Phase contrast microscopy is used in the upper panel; Immunofluorescence is used in the lower panel.

[0020] Figure 2 shows immunodetection of collagen type II in human adipose stromal cells from pellet cultures. Phase contrast microscopy is used in the upper panel; Immunofluorescence is used in the lower panel.

[0021] Figure 3 shows immunodetection of collagen type IT in human adipose stromal cells from alginate cultures. Phase contrast microscopy is used in the upper panel; Immunofluorescence is used in the lower panel.

[0022] Figure 4 shows Collagen type VI expression when cells were cultured in an alginate matrix at 2 weeks without TGF-beta (control) and with TGF-beta.

[0023] Figure 5 shows a Western blot of results when

cells were grown as monolayers or in an alginate suspension for the expression of different proteins including: collagen type VI, link, aggrecan, collagen type I, and actin.

DETAILED DESCRIPTION OF INVENTION

[0024] The present invention provides methods and a composition for the differentiation and culture of adipose tissue-derived stromal cells into chondrocytes. The cells produced by the methods of invention are useful in providing a source of fully differentiated and functional cells for research, transplantation, and development of tissue engineering products for the treatment of human disease and traumatic injury repair. Thus, in one aspect, the invention provides a method for differentiating adipose tissue-derived stromal cells into chondrocytes comprising culturing stromal cells in a composition which comprises a medium capable of supporting the growth and differentiation of stromal cells into functional chondrocytes. This invention further provides methods for the introduction of these chondrocytes into cartilage defect areas for repair.

[0025] "Adipose stromal cells" refers to stromal cells that originate from adipose tissue. By "adipose" is meant any fat tissue. The adipose tissue may be brown or white adipose tissue, derived from subcutaneous, omental/visceral, mammary, gonadal, or other adipose tissue site. Preferably, the adipose is subcutaneous white adipose tissue. Such cells may comprise a primary cell culture or an immortalized cell line. The adipose tissue may be from any organism having fat tissue. Preferably, the adipose tissue is mammalian, most preferably the adipose tissue is human. A convenient source of adipose tissue is from liposuction surgery, however, the source of adipose tissue or the method of isolation of adipose tissue is not critical to the invention. If stromal cells are desired for autologous transplantation into a subject, the adipose tissue will be isolated from that subject.

[0026] "Chondrocytes (cartilage cells)" refers to cells that are capable of expressing characteristic biochemical markers of chondrocytes, including but not limited to collagen type II, chondroitin sulfate, keratin sulfate and characteristic morphologic markers of smooth muscle, including but not limited to the rounded morphology observed in culture, and able to secrete collagen type II, including but not limited to the generation of tissue or matrices with hemodynamic properties of cartilage *in vitro*.

[0027] Any medium capable of supporting stromal cells in tissue culture may be used. Media formulations that will support the growth of fibroblasts include, but are not limited to, Dulbecco's Modified Eagle's Medium (DMEM), alpha modified Minimal Essential Medium (α MEM), and Roswell Park Memorial Institute Media 1640 (RPMI Media 1640) and the like. Typically, 0 to 20% Fetal Bovine Serum (FBS) or 1-20% horse serum will be added to the above media in order to support the

growth of stromal cells and/or chondrocytes. However, a defined medium could be used if the necessary growth factors, cytokines, and hormones in FBS for stromal cells and chondrocytes are identified and provided at appropriate concentrations in the growth medium. Media useful in the methods of the invention may contain one or more compounds of interest, including, but not limited to antibiotics mitogenic or differentiative compounds for stromal cells. The cells will be grown at temperatures between 31°C to 37°C in a humidified incubator. The carbon dioxide content will be maintained between 2% to 10% and the oxygen content between 1% and 22%. Cells will remain in this environment for periods of up to 4 weeks.

[0028] Antibiotics which can be supplemented into the medium include, but are not limited to penicillin and streptomycin. The concentration of penicillin in the chemically defined culture medium is about 10 to about 200 units per ml. The concentration of streptomycin in the chemically defined culture medium is about 10 to about 200 µg/ml.

[0029] Glucocorticoids that can be used in the invention include but are not limited to hydrocortisone and dexamethasone. The concentration of dexamethasone in the medium is about 1 to about 100 nM. The concentration of hydrocortisone in the medium is about 1 to about 100 nM.

[0030] As used herein the terms "chondroinductive agent" or "chondroinductive factor" refers to any natural or synthetic, organic or inorganic chemical or biochemical compound or combination or mixture of compounds, or any mechanical or other physical device, container, influence or force that can be applied to human adipose tissue-derived stromal cells so as to effect their *in vitro* chondrogenic induction or the production of chondrocytes. The chondroinductive agent is preferably selected, individually or in combination, from the group consisting of (i) a glucocorticoid such as dexamethasone; (ii) a member of the transforming growth factor-β superfamily such as a bone morphogenic protein (preferably BMP-2 or BMP-4), TGF-β1, TGF-β2, TGF-β3, insulin-like growth factor (IGF), platelet derived growth factor (PDGF), epidermal growth factor (EGF), acidic fibroblast growth factor (aFBF), basic fibroblast growth factor (bFBF), hepatocytic growth factor (HGF), keratocyte growth factor (KGF), osteogenic proteins (OP-1, OP-2, and OP-3), inhibin A or chondrogenic stimulating activity factor (CSA); (iii) a component of the collagenous extracellular matrix such as collagen I (particularly in the form of a gel); and (iv) a vitamin A analogue such as retinoic acid and; (v) ascorbate or other related vitamin C analogue.

[0031] The concentration of transforming growth factor-beta is about 1 to about 100 ng/ml. The concentration of retinoic acid is about 0.1 to about 1 µg/ml.

[0032] Examples of compounds that are stromal cell mitogens include but are not limited to transforming growth factor β; fibroblast growth factor, bone morpho-

genetic protein and stromal cell differentiating factors include but are not limited to dexamethasone, hydrocortisone, transforming growth factor β, fibroblast growth factor, and bone morphogenetic protein and the like.

[0033] Preferably, the adipose tissue derived stromal cells are isolated from the adipose tissue of the subject into which the final differentiated cells are to be introduced. However, the stromal cells may also be isolated from any organism of the same or different species as the subject. Any organism with adipose tissue can be a potential candidate. Preferably, the organism is mammalian, most preferably the organism is human.

[0034] The present invention also provides a method for differentiating adipose derived stromal cells into chondrocytic cells by suspending the cells in a calcium alginate or another biocompatible lattice or matrix capable of supporting chondrogenesis in a three dimensional configuration. Examples of lattice materials include (1) calcium alginate, a polysaccharide of cross linked L-glucuronic and D-mannuronic acid, at concentrations of between 1% to 4%; (2) fibrin; (3) collagen type II; or (4) agarose gel. The lattices or matrixes containing the cells are transferred to culture dishes containing: (1) a chondroinductive agent that can activate any cellular transduction pathway leading to the mature chondrocyte phenotype; (2) an antibiotic; (3) a nutrient supplement such as fetal bovine serum or horse serum; (4) ascorbate or related vitamin C analogue; and (5) a glucocorticoid or another chemical agent capable of activating the cellular glucocorticoid receptor.

[0035] The adipose tissue derived stromal cells may be stably or transiently transfected or transduced with a nucleic acid of interest using a plasmid, viral or alternative vector strategy. Nucleic acids of interest include, but are not limited to, those encoding gene products which enhance the production of extracellular matrix components found in cartilage; examples include transforming growth factor β, bone morphogenetic protein, activin and insulin-like growth factor.

[0036] The transduction of viral vectors carrying regulatory genes into the stromal cells can be performed with viral vectors (adenovirus, retrovirus, adeno-associated virus, or other vector) purified by cesium chloride banding or other method at a multiplicity of infection (viral units:cell) of between 10:1 to 2000:1. Cells will be exposed to the virus in serum free or serum-containing medium in the absence or presence of a cationic detergent such as polyethyleneimine or Lipofectamine™ for a period of 1 hour to 24 hours (Byk T. *et al.* (1998) *Human Gene Therapy* 9:2493-2502; Sommer B. *et al.* (1999) *Calif. Tissue Int.* 64:45-49).

[0037] The transfection of plasmid vectors carrying regulatory genes into the stromal cells can be introduced into the cells in monolayer cultures by use of calcium phosphate DNA precipitation or cationic detergent methods (Lipofectamine™, DOTAP) or in three dimensional cultures by incorporation of the plasmid DNA vectors directly into the biocompatible polymer (Bonadio J.

et al. (1999) *Nat. Med.* 5:753-759).

[0038] For the tracking and detection of functional proteins encoded by these genes, the viral or plasmid DNA vectors will contain a readily detectable marker gene, such as the green fluorescent protein or beta-galactosidase enzyme, both of which can be tracked by histochemical means.

[0039] For the development of biomechanical carriers for the re-introduction of the stromal cells into a living organism, the carriers include but are not limited to calcium alginate, agarose, types I, II, IV or other collagen isoform, fibrin, poly-lactic/polyglycolic acid, hyaluronate derivatives or other materials (Perka C. et al. (2000) *J. Biomed. Mater. Res.* 49:305-311; Sechrist VF. et al. (2000) *J. Biomed. Mater. Res.* 49:534-541; Chu CR et al. (1995) *J. Biomed. Mater. Res.* 29:1147-1154; Hendrickson DA et al. (1994) *Orthop. Res.* 12:485-497).

[0040] Another object of the invention is to provide for the identification and study of compounds that enhance the differentiation of adipose tissue derived stromal cells into chondrocytes. Compounds which enhance differentiation may be of value in the treatment of partial or full cartilage defects, osteoarthritis, traumatized cartilage, cosmetic surgery of inborn defects including cleft palate or deviated septum. Methods include but are not limited to the development of three-dimensional *in vitro* cultures maintaining adipose tissue-derived stromal cells as chondrocytes that can be subsequently exposed to novel compounds of interest.

[0041] Any compound may be tested for its ability to affect the differentiation of adipose tissue derived stromal cells into chondrocytes. Appropriate vehicles compatible with the compound to be tested are known to those skilled in the art and may be found in the current edition of Remington's Pharmaceutical Sciences (1995, Mack Publishing Co., Easton, PA) the contents of which are incorporated herein by reference.

[0042] The features and advantages of the present invention will be more clearly understood by reference to the following examples, which are not to be construed as limiting the invention.

EXPERIMENTAL

Differentiation of Adipose Tissue-Derived Stromal Cells into Chondrocytes

EXAMPLE 1: *In vitro* Chondrogenesis using Dexamethasone

[0043] Stromal cells are isolated from human subcutaneous adipose tissue according to methods described in "Methods and Composition of the Differentiation of Human Preadipocytes into Adipocytes" Serial Number 09/240,029 Filed January 29, 1999. These cells are plated at a density of 500 to 20,000 cells per cm². The present invention contemplates that the creation of a precartilage condensation *in vitro* promotes chondro-

genesis in mesenchymal progenitor cells derived from human adipose tissue. This is accomplished by methods including, but not limited to:

(1) The pellet culture system, which was developed for use with isolated growth plate cells (Kato et al. (1988) *PNAS* 85:9552-9556; Ballock & Reddi, *J. Cell Biol.* (1994) 126(5):1311-1318) and has been used to maintain expression of the cartilage phenotype of chondrocytes placed in culture (Solursh (1991) *J. Cell Biochem* 45:258-260).

(2) The alginate suspension method, where cells are maintained in a calcium alginate suspension to prevent cell-cell contact and maintain a characteristic rounded morphology promoting the maintenance or acquisition of the chondrocyte phenotype.

[0044] Human adipose tissue-derived cells are isolated as described above. For pellet cultures, aliquots of 200,000 cells were centrifuged at 500g for 10 minutes in sterile 15 ml conical polypropylene tubes in DMEM with 10% fetal bovine serum, 50 ng/ml ascorbate-2-phosphate, 100 nM dexamethasone (DEX) and then incubated at 37° C in a 5% CO₂ incubator for up to 3 weeks. For alginate cultures, cells were suspended at a density of 1 million cells per ml in 1.2% calcium alginate and maintained in DMEM with 10% fetal bovine serum, 50 ng/ml ascorbate-2-phosphate, 100 nM dexamethasone (DEX) and then incubated at 37° C in a 5% CO₂ incubator for up to 3 weeks. After 2 or 4 weeks, the cells were isolated, fixed and analyzed for chondrocyte lineage markers by immunohistochemistry with appropriate antibody reagents or by staining with toluidine blue to detect the presence of sulfated proteoglycans in the extracellular matrix.

[0045] Results obtained with an antibody detecting a representative chondrocyte marker protein, collagen II, are shown in Figures 1-3. The cells maintained in pellet culture (Figure 2) or calcium alginate (Figure 3) stained positive by immunofluorescence for the intracellular presence of the collagen II protein. These results are to be contrasted with identical analysis of adipose tissue-derived cells maintained for 3 weeks in monolayer culture as shown in Figure 1; here, no staining whatsoever is observed. Immunohistochemical results with an antibody reagent detecting the chondrocyte marker protein, collagen VI, are shown in Figure 4. Adipose tissue-derived stromal cells were maintained in 1.2% calcium alginate and maintained in DMEM with 10% fetal bovine serum, 50 ng/ml ascorbate-2-phosphate, 100 nM dexamethasone (DEX) in the absence or presence of transforming growth factor β (10 ng/ml) and then incubated at 37° C in a 5% CO₂ incubator for up to 2 weeks. Immunohistochemistry revealed a dense deposition of the collagen VI protein surrounding those cells maintained in the presence, but not the absence, of transforming growth factor β .

[0046] Polymerase chain reaction results detecting

representative gene markers associated with chondrogenesis are shown in Figure 5. Adipose tissue-derived stromal cells were maintained in 1.2% calcium alginate (Alg) or in monolayer (Mono) cultures and maintained in DMEM with 10% fetal bovine serum, 50 ng/ml ascorbate-2-phosphate, 100 nM. dexamethasone (DEX) in the absence (TGFβ-) or presence (TGFβ +) of transforming growth factor β (10 ng/ml) for a period of 4 weeks. Total RNA was isolated from the individual cultures and used in polymerase chain reactions with primers specific for collagens types I or VI, the proteoglycan link (Link) protein, aggrecan, or actin. The collagen markers and actin were detected under all growth conditions. However, the link mRNAs were most abundant under alginate suspension conditions and aggrecan was only present under alginate conditions in the presence of TGFβ.

[0047] These results demonstrate that, through a combination of creating an *in vitro* cell condensation and adding the appropriate permissive factors, we are able to produce the expression of chondrocyte markers consistent with chondrogenesis in cells from subcutaneous adipose tissue.

Example 2: Preparation of Synthetic Cartilage Patch

[0048] Following proliferation, the chondrogenic cells still having chondrogenic potential may be cultured in an anchorage-independent manner, i.e., in a well having a cell contacting, cell adhesive surface, in order to stimulate the secretion of cartilage-specific extracellular matrix components.

[0049] Heretofore, it has been observed that chondrogenic cells proliferatively expanded in an anchorage-dependent manner usually dedifferentiate and lose their ability to secrete cartilage-specific type II collagen and sulfated proteoglycan. (Mayne *et al.* (1984) *Exp. Cell Res.* 151(1): 171-82; Mayne *et al.* (1976) *PNAS* 73(5): 1674-8; Okayama *et al.* (1976) *PNAS* 73(9):3224-8; Pacifici *et al.* (1981) *J. Biol. Chem.* 256(2): 1029-37; Pacifici *et al.* (1980) *Cancer Res.* 40(7); 2461-4; Pacifici *et al.* (1977) *Cell* 4: 891-9; von der Mark *et al.* (1977) *Nature* 267(5611):531-2; West *et al.* (1979) *Cell* 17(3):491-501; Oegama *et al.* (1981) *J. Biol. Chem.* 256(2):1015-22; Benya *et al.* (1982) *Cell* 30(1):215-24).

[0050] It has been discovered that undifferentiated chondrogenic cells, when seeded into, and cultured in a well having a cell contacting surface that discourages adhesion of cells to the cell contacting surface, the cells redifferentiate and start to secrete cartilage-specific collagen and sulfated proteoglycans thereby to form a patch of synthetic cartilage *in vitro* (US Patent Nos. 5,902,741 and 5,723,331).

[0051] In addition, it has been found that culturing the cells in a pre-shaped well, enables one to manufacture synthetic cartilage patches of pre-determined thickness and volume. It is appreciated, however, that the volume of the resulting patch of cartilage is dependent not only

upon the volume of the well but also upon the number of chondrogenic cells seeded into the well. Cartilage of optimal pre-determined volume may be prepared by routine experimentation by altering either, or both of the aforementioned parameters.

A. Preparation of Pre-shaped Well.

[0052] Several approaches are available for preparing pre-shaped wells with cell contacting, cell adhesive surfaces.

[0053] The cell contacting surface of the well may be coated with a molecule that discourages adhesion of chondrogenic cells to the cell contacting surface. Preferred coating reagents include silicon based reagents i.e., dichlorodimethylsilane or polytetrafluoroethylene based reagents, i.e., Teflon.RTM.. Procedures for coating materials with silicon based reagents, specifically dichlorodimethylsilane, are well known in the art. See for example, Sambrook *et al.* (1989) "Molecular Cloning A Laboratory Manual", Cold Spring Harbor Laboratory Press, the disclosure of which is incorporated by reference herein. It is appreciated that other biocompatible reagents that prevent the attachment of cells to the surface of the well may be useful in the practice of the instant invention.

[0054] Alternatively, the well may be cast from a pliable or moldable biocompatible material that does not permit attachment of cells per se. Preferred materials that prevent such cell attachment include, but are not limited to, agarose, glass, untreated cell culture plastic and polytetrafluoroethylene, i.e., Teflon.RTM. Untreated cell culture plastics, i.e., plastics that have not been treated with or made from materials that have an electrostatic charge are commercially available, and may be purchased, for example, from Falcon Labware, Becton-Dickinson, Lincoln Park, N.J. The aforementioned materials, however, are not meant to be limiting. It is appreciated that any other pliable or moldable biocompatible material that inherently discourages the attachment of chondrogenic cells may be useful in the practice of the instant invention.

[0055] The size and shape of the well may be determined by the size and shape of the articular cartilage defect to be repaired. For example, it is contemplated that the well may have a cross-sectional surface area of 25 cm.sup.2. This is the average cross-sectional surface area of an adult, human femoral condyle. Accordingly, it is anticipated that a single piece of synthetic cartilage may be prepared in accordance with the invention in order to resurface the entire femoral condyle. The depth of the well is preferably greater than about 0.3 cm and preferably about 0.6 cm in depth. The thickness of natural articular cartilage in an adult articulating joint is usually about 0.3 cm. Accordingly, the depth of the well should be large enough to permit a cartilage patch of about 0.3 cm to form. However, the well should also be deep enough to contain growth medium overlaying the

cartilage patch.

[0056] It is contemplated also that a large piece of cartilage prepared in accordance with the invention may be "trimmed" to a pre-selected size and shape by a surgeon performing surgical repair of the damaged cartilage. Trimming may be performed with the use of a sharp cutting implement, i.e., a scalpel, a pair of scissors or an arthroscopic device fitted with a cutting edge, using procedures well known in the art.

[0057] The pre-shaped well preferably is cast in a block of agarose gel under aseptic conditions. Agarose is an economical, biocompatible, pliable and moldable material that can be used to cast pre-shaped wells, quickly and easily. As mentioned above, the dimensions of the well may depend upon the size of the resulting cartilage plug that is desired.

[0058] A pre-shaped well may be prepared by pouring a hot solution of molten LT agarose (BioRad, Richmond, CA) into a tissue culture dish containing a cylinder. The cylinder having dimensions that mirror the shape of the well to be formed. The size and shape of the well may be chosen by the artisan and may be dependent upon the shape of the articular cartilage defect to be repaired. Once the agarose has cooled and solidified around the cylinder, the cylinder is carefully removed with forceps. The surface of the tissue culture dish that is exposed by the removal of the cylinder is covered with molten agarose. This seals the bottom of the well and provides a cell adhesive surface at the base of the well. When the newly added molten LT agarose cools and solidifies, the resulting pre-shaped well is suitable for culturing, and stimulating the redifferentiation of proliferated chondrogenic cells. It is appreciated, however, that alternative methods may be used to prepare a pre-shaped well useful in the practice of the invention.

B. Growth of Cartilage Patch.

[0059] Proliferated chondrogenic cells in suspension may be seeded into and cultured in the pre-shaped well. The cells may be diluted by the addition of cell culture medium to a cell density of about 1×10^5 to 1×10^9 chondrogenic cells per ml. A preferred cell culture medium comprises DMEM supplemented with 10% fetal bovine serum.

[0060] Within about four hours of seeding the chondrogenic cells into the well, the cells may coalesce to form a cohesive plug of cells. After about 4-10 days, the cells will start to secrete cartilage-specific sulfated proteoglycans and type II collagen. After prolonged periods of time in culture the collagen expressed by the chondrogenic cells in the well will be predominantly type II collagen. It is contemplated however, that the cohesive plug of cells formed within four hours may be removed from the well and surgically implanted into the cartilage defect. It is anticipated that the undifferentiated chondrogenic cells subsequently may redifferentiate in situ thereby to form synthetic cartilage within the joint.

[0061] It is contemplated that chondrocytic differentiation or stimulatory factors may be added to the chondrogenic cells in the pre-shaped well to enhance or stimulate the production of articular cartilage specific proteoglycans and/or collagen (Luyten & Reddi (1992) in "Biological Regulation of the Chondrocytes", CRC Press, Boca Raton, Ann Arbor, London, and Tokyo, p.p. 227-236). Preferred growth factors include, but are not limited to transforming growth factor- β (TGF- β), insulin-like growth factor (IGF), platelet derived growth factor (PDGF), epidermal growth factor (EGF), acidic fibroblast growth factor (aFBF), basic fibroblast growth factor (bFBF), hepatocytic growth factor, (HGF) keratinocyte growth factor (KGF), the bone morphogenic factors (BMPs) i.e., BMP-1, BMP-2, BMP-3, BMP-4, BMP-5 and BMP-6 and the osteogenic proteins (OPs), i.e. OP-1, OP-2 and OP-3. Preferred concentrations of TGF- β , IGF, PDGF, EGF, aFBF, bFBF, HGF, and KGF, range from about 1 to 100 ng/ml. Preferred concentrations of the BMP's and OP's range from about 1 to about 500 ng/ml.

[0062] However, these particular growth factors are not limiting. Any polypeptide growth factor capable of stimulating or inducing the production of cartilage specific proteoglycans and collagen may be useful in the practice of the instant invention.

[0063] In addition, it is contemplated that ascorbate may be added to the chondrogenic cells in the pre-shaped well to enhance or stimulate the production of cartilage specific proteoglycans and collagen. Preferred concentrations of ascorbate range from about 1 to about 1000 μ g/ml.

Example 3: Surgical Repair of Articular cartilage Defect

[0064] Cartilage defects in mammals are readily identifiable visually during arthroscopic examination or during open surgery of the joint. Cartilage defects may also be identified inferentially by using computer aided tomography (CAT scanning), X-ray examination, magnetic resonance imaging (MRI), analysis of synovial fluid or serum markers or by any other procedures known in the art. Treatment of the defects can be effected during an arthroscopic or open surgical procedure using the methods and compositions disclosed herein.

[0065] Accordingly, once the defect has been identified, the defect may be treated by the following steps of (1) surgically implanting at the pre-determined site, a piece of synthetic articular cartilage prepared by the methodologies described herein, and (2) permitting the synthetic articular cartilage to integrate into pre-determined site.

[0066] The synthetic cartilage patch optimally has a size and shape such that when the patch is implanted into the defect, the edges of the implanted tissue contact directly the edges of the defect. In addition, the synthetic cartilage patch may be fixed in place during the surgical procedure. This can be effected by surgically fixing

the patch into the defect with biodegradable sutures, i. e., (Ethicon, Johnson & Johnson) and/or by applying a bioadhesive to the region interfacing the patch and the defect. Preferred bioadhesives include, but are not limited to: fibrin-thrombin glues similar to those disclosed in Fr. Pat. No. 2 448 900; Fr. Pat. No. 2 448 901 and EP. S.N. 88401961.3 and synthetic bioadhesives similar to those disclosed in U.S. Pat. No. 5,197,973. It is contemplated, however, that alternative types of sutures and biocompatible glues may be useful in the practice of the invention

[0067] In some instances, damaged articular cartilage may be surgically excised prior to the implantation of the patch of synthetic cartilage. Additionally, the adhesion of the synthetic cartilage patch to the articular cartilage defect may be enhanced by treating the defect with transglutaminase (Ichinose *et al.* (1990) *J. Biol. Chem.* 265(3):13411-13414; Najjar *et al.* (1984) in "Transglutaminases", Boston, Martinuse-Nijhoff). Initially, the cartilage defect is dried, for example by using cottonoid, and filled with a solution of transglutaminase. The solution is subsequently removed, for example, by aspiration, leaving a film containing transglutaminase upon the cartilage. The synthetic cartilage patch is implanted subsequently into the defect by the methods described above.

[0068] In addition the synthetic cartilage may be useful in the repair of human articular cartilage defects. Accordingly, chondrogenic cells may be differentiated from human adipose tissue-derived stromal cells, i.e., human subcutaneous adipose tissue.

[0069] Surgical procedures for effecting the repair of articular cartilage defects are well known in the art. See for example: Luyten & Reddi (1992) in "Biological Regulation of the Chondrocytes", CRC Press, Boca Raton, Ann Arbor, London, & Tokyo, p.p. 227-236, the disclosure of which is incorporated by reference herein.

[0070] The above demonstrates a culture system in which human adipose tissue-derived stromal cells differentiate into hypertrophic chondrocytes. Since all components are defined, the system can be used for studies of the effects of growth factors *etc.* on the progression of chondrogenesis. *In vitro* systems have been used by us and others to show that these cell populations have osteogenic and adipocytic potential. We demonstrate here that this population has chondrogenic potential. This has clinical applicability for cartilage repair.

[0071] The invention also provides a process for inducing chondrogenesis in human adipose tissue-derived stromal cells by contacting such cells with a chondroinductive agent *in vitro* where the stromal cells are associated in a three dimensional format.

[0072] The invention also provides a process for using *in vitro* differentiated chondrocytes from adipose-derived stromal cells in the repair of cartilage tissue in mammals, including humans.

[0073] In the above methods, the stromal cells are

preferably isolated, culture expanded human adipose tissue-derived stromal cells in a chemically defined environment and are condensed into close proximity, such as in the form of a three dimensional cell mass, e.g. packed cells or a centrifugal cell pellet. Further, the contacting preferably comprises culturing a pellet of human adipose tissue-derived stromal cells in a chemically defined medium which comprises DMEM with 10% serum, 50 ng/ml ascorbate-2-phosphate, 10^{-7} M dexamethasone. The differentiated cells are then introduced into the surgery site to repair cartilage. Since all components of the system are defined, the system can be used as a product for cartilage repair in mammals, including man and horses.

Claims

1. A medium for differentiating adipose tissue derived stromal cells into chondrocyte cells, comprising: a chemically defined culture medium having or supplemented with (i) a chondroinductive agent capable of activating any cellular transduction pathway leading to the mature chondrocyte phenotype (ii) an antibiotic (iii) a nutrient supplement such as 1-20% fetal bovine serum or 1-20% horse serum or any other biological or synthetic equivalent combination of proteins (iv) ascorbate or related vitamin C analogue and (v) a glucocorticoid or other chemical agent capable of activating the cellular glucocorticoid receptor.
2. The medium of claim 1, wherein the chondroinductive agent or stromal cell mitogen is selected individually or in combination from the group consisting of: a glucocorticoid; a member of the transforming growth factor-beta superfamily; a collagenous extracellular matrix molecule; and a vitamin A analog.
3. The medium of claim 1, wherein said antibiotic is penicillin.
4. The medium of claim 1, wherein said antibiotic is streptomycin.
5. The medium of claim 3, wherein the concentration of penicillin is about 10 to about 200 units per ml.
6. The medium of claim 4, wherein the concentration of streptomycin is about 10 to about 200 μ g per ml.
7. The medium of claim 2, wherein the glucocorticoid is hydrocortisone.
8. The medium of claim 2, wherein said glucocorticoid is dexamethasone.
9. The medium of claim 8, wherein the concentration

- of dexamethasone is about 1 to about 100 nM.
10. The medium of claim 7, wherein the concentration of hydrocortisone is about 1 to about 100 nM.
11. The medium of claim 2, wherein said transforming growth factor-beta is selected from the group consisting of: bone morphogenic protein-2, bone morphogenic protein-4, TGF- β 1, TGF- β 2, TGF- β 3, IGF, PDGF, EGF, aFBF, bFBF, HGF, KGF, inhibin A, and chondrogenic stimulating factor.
12. The medium of claim 11, wherein the concentration of transforming growth factor-beta is about 1 to about 100 ng per ml.
13. The method according to claim 11, further comprising TGF β -1 at concentrations from about 1 ng/ml to about 10 ng/ml.
14. The medium of claim 2, wherein the collagenous extracellular matrix molecule is collagen I.
15. The medium of claim 2, wherein the vitamin A analog is retinoic acid.
16. The medium of claim 15, wherein the concentration of retinoic acid is about 0.1ng per ml to about 1 μ g per ml.
17. A method for differentiating adipose tissue derived stromal cells into chondrocytic cells, comprising:
- a) pelleting said stromal cells by centrifuging between 50,000 to 5 million cells at 500 X g for 2 to 20 minutes in sterile tubes containing a medium such as Dulbecco's Modified Eagle's Medium (DMEM) or alpha modified Minimal Essential Medium (α MEM) or Roswell Park Memorial Institute media 1640 (RPMI Media 1640;
- b) plating isolated stromal cells at a density of 500 to 20,000 cells/cm² in a differentiating medium;
- c) supplementing said medium with:
- (i) a chondroinductive agent capable of activating any cellular signal transduction pathway leading to the mature chondrocyte phenotype
- (ii) an antibiotic;
- (iii) a nutrient supplemented with 1 to 20% fetal bovine serum or 1 to 20% horse serum or any other biological or synthetic equivalent combination of proteins;
- (iv) ascorbate or related vitamin C analog;
- (v) a glucocorticoid or other chemical agent capable of activating the cellular glucocorticoid receptor; and
- d) incubating said cells at about 31°C to 37° C for about 3-4 weeks in with 5% CO₂ and between 1% and 20% oxygen.
18. A method for differentiating adipose tissue derived stromal cells into chondrocytic cells, comprising:
- a) suspending stromal cells at a concentration of 0.5 to 10 million cells per ml in calcium alginate or any other biocompatible lattice or matrix of supporting chondrogenesis in a three-dimensional configuration;
- b) transferring cells to 35 mm culture dishes and plating cells at a density of 500 to 20,000 cells/cm² in a differentiating medium comprising a chemically defined culture medium having or supplemented with:
- (i) a chondroinductive agent capable of activating any cellular transduction pathway leading to the mature chondrocyte phenotype;
- (ii) an antibiotic;
- (iii) a nutrient supplemented with 1 to 20% fetal bovine serum or 1 to 20% horse serum or any other biological or synthetic equivalent combination of proteins;
- (iv) ascorbate or related vitamin C analog;
- (v) a glucocorticoid or other chemical agent capable of activating the cellular glucocorticoid receptor; and
- c) incubating said cells at about 31 to 37°C for about 3-4 weeks in an incubator with 5% CO₂ and between 1% and 20% oxygen.

Figure 1

- Immunodetection of collagen type II in human adipose stromal cells from monolayer cultures: Phase contrast (upper), Immunofluorescence (lower)



Figure 2

- Immunodetection of collagen type II in human adipose stromal cells from pellet cultures: Phase contrast (upper), Immunofluorescence (lower)

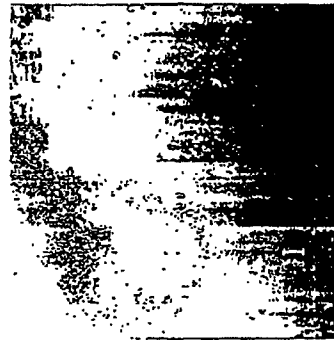


Figure 3

- Immunodetection of collagen type II in human adipose stromal cells from alginate cultures:
Phase contrast (upper),
Immunofluorescence (lower)



Figure 4: Collagen VI 2 Wk Alginate

Control

TGF β

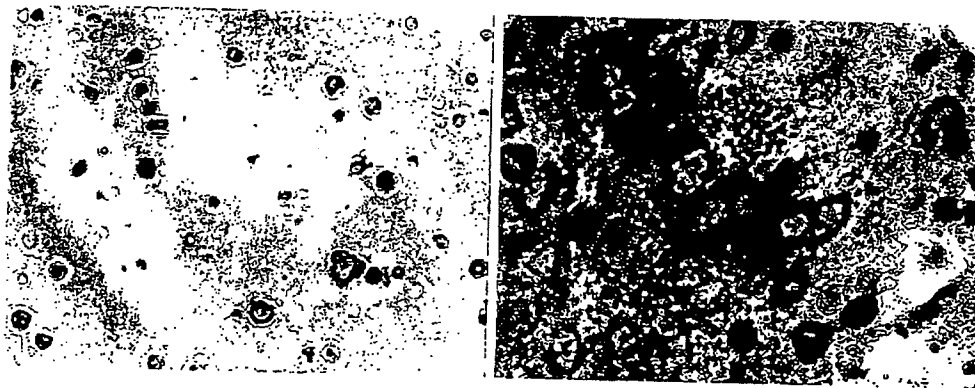
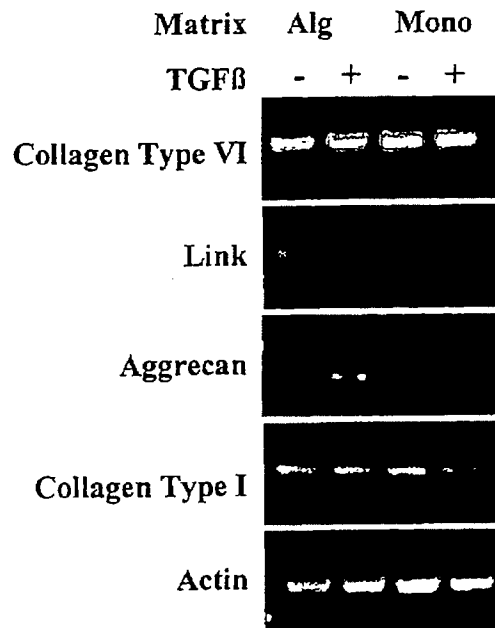


Figure 5





European Patent
Office

EUROPEAN SEARCH REPORT

Application Number
EP 00 30 7155

DOCUMENTS CONSIDERED TO BE RELEVANT			
Category	Citation of document with indication, where appropriate, of relevant passages	Relevant to claim	CLASSIFICATION OF THE APPLICATION
A	BOND A ET AL: "Human subcutaneous preadipocytes differentiate into osteoblasts." FASEB JOURNAL, vol. 13, no. 4 PART 1, 12 March 1999 (1999-03-12), page A600 XP000971053 Annual Meeting of the Professional Research Scientists for Experimental Biology 99; Washington, D.C., USA; April 17-21, 1999 ISSN: 0892-6638 * abstract *	1,17,18	C12N5/00 C12N5/06 C12N1/38
A	POLIARD A ET AL: "Controlled conversion of an immortalized mesodermal progenitor cell towards osteogenic, chondrogenic, or adipogenic pathways" JOURNAL OF CELL BIOLOGY, US, ROCKEFELLER UNIVERSITY PRESS, NEW YORK, US, vol. 130, no. 6, September 1995 (1995-09), pages 1461-1472, XP002099457 ISSN: 0021-9525 * the whole document *	1,2,8,9, 11-13, 17,18	TECHNICAL FIELDS SEARCHED C12N
A	TAVASSOLI M: "IN-VIVO DEVELOPMENT OF ADIPOSE TISSUE FOLLOWING IMPLANTATION OF LIPID DEPLETED CULTURED ADIPOCYTE" EXPERIMENTAL CELL RESEARCH, vol. 137, no. 1, 1982, pages 55-62, XP000972508 ISSN: 0014-4827 * the whole document *	1,3-6, 17,18	
-/--			
The present search report has been drawn up for all claims			
Place of search BERLIN		Date of completion of the search 15 December 2000	Examiner Mateo Rosell, A.M.
CATEGORY OF CITED DOCUMENTS X: particularly relevant if taken alone Y: particularly relevant if combined with another document of the same category A: technological background O: non-written disclosure P: intermediate document		T: theory or principle underlying the invention E: earlier patent document, but published on, or after the filing date D: document cited in the application L: document cited for other reasons &: member of the same patent family, corresponding document	

EPO FORM 1503 03 82 (P04C01)



European Patent
Office

EUROPEAN SEARCH REPORT

Application Number
EP 00 30 7155

DOCUMENTS CONSIDERED TO BE RELEVANT				
Category	Citation of document with indication, where appropriate, of relevant passages	Relevant to claim	CLASSIFICATION OF THE APPLICATION	
A	AHRENS M ET AL: "Expression of human bone morphogenetic proteins-2 or -4 in murine mesenchymal progenitor C3H10T1/2 cells induces differentiation into distinct mesenchymal cell lineages" DNA AND CELL BIOLOGY,US,NEW YORK, NY, vol. 12, no. 10, 1 December 1993 (1993-12-01), pages 871-880, XP002087786 ISSN: 1044-5498 * the whole document *	1,11,17,18		
A	WO 95 33821 A (ADVANCED TISSUE SCIENCES INC) 14 December 1995 (1995-12-14) * abstract * * page 9, paragraph 2 - page 10, paragraph 2 * * page 15, paragraph 2 - page 29, paragraph 1; examples 7,8 *	1,2,11		
A	WO 99 28444 A (HALVORSEN YUAN DI C ;ZEN BIO INC (US)) 10 June 1999 (1999-06-10) * abstract * * page 5, line 13-25 * * page 7, line 3 - page 9, line 8; examples 1-3 *	1,17,18		TECHNICAL FIELDS SEARCHED
A	US 5 446 143 A (SIMPSON EVAN R ET AL) 29 August 1995 (1995-08-29) * page 1, line 49-56 * * column 4, line 50-68 *	1,2,8		
-/--				
The present search report has been drawn up for all claims				
Place of search BERLIN		Date of completion of the search 15 December 2000	Examiner Mateo Rosell, A.M.	
<p>CATEGORY OF CITED DOCUMENTS</p> <p>X : particularly relevant if taken alone Y : particularly relevant if combined with another document of the same category A : technological background O : non-written disclosure P : intermediate document</p> <p>T : theory or principle underlying the invention E : earlier patent document, but published on, or after the filing date D : document cited in the application L : document cited for other reasons</p> <p>& : member of the same patent family, corresponding document</p>				

EPC FORM 1503 03/82 (P04/001)



European Patent Office

EUROPEAN SEARCH REPORT

Application Number
EP 00 30 7155

DOCUMENTS CONSIDERED TO BE RELEVANT			
Category	Citation of document with indication, where appropriate, of relevant passages	Relevant to claim	CLASSIFICATION OF THE APPLICATION
T	GIMBLE J M ET AL: "Adipose tissue: Derived stromal cells are multipotent." JOURNAL OF BONE AND MINERAL RESEARCH, vol. 15, no. Suppl. 1, September 2000 (2000-09), page S508 XP000972512 Twenty-Second Annual Meeting of the American Society for Bone and Mineral Research; Toronto, Ontario, Canada; September 22-26, 2000 ISSN: 0884-0431 * abstract *	1-18	
			TECHNICAL FIELDS SEARCHED
The present search report has been drawn up for all claims			
Place of search BERLIN		Date of completion of the search 15 December 2000	Examiner Mateo Rosell, A.M.
CATEGORY OF CITED DOCUMENTS X : particularly relevant if taken alone Y : particularly relevant if combined with another document of the same category A : technological background O : non-written disclosure P : intermediate document		T : theory or principle underlying the invention E : earlier patent document, but published on, or after the filing date D : document cited in the application L : document cited for other reasons & : member of the same patent family, corresponding document	

EPO FORM 1503 03/82 (P/4C01)

**ANNEX TO THE EUROPEAN SEARCH REPORT
ON EUROPEAN PATENT APPLICATION NO.**

EP 00 30 7155

This annex lists the patent family members relating to the patent documents cited in the above-mentioned European search report. The members are as contained in the European Patent Office EDP file on The European Patent Office is in no way liable for these particulars which are merely given for the purpose of information.

15-12-2000

Patent document cited in search report	Publication date	Patent family member(s)	Publication date
WO 9533821 A	14-12-1995	US 5902741 A	11-05-1999
		AU 689605 B	02-04-1998
		AU 2769695 A	04-01-1996
		CA 2192064 A	14-12-1995
		EP 0812351 A	17-12-1997
		NZ 288467 A	28-10-1998
		US 5962325 A	05-10-1999
		US 6140039 A	31-10-2000
		US 6022743 A	08-02-2000
US 5863531 A	26-01-1999		
WO 9928444 A	10-06-1999	AU 1615599 A	16-06-1999
		EP 1036163 A	20-09-2000
US 5446143 A	29-08-1995	NONE	

EPC FORM P0459

For more details about this annex : see Official Journal of the European Patent Office, No. 12/82